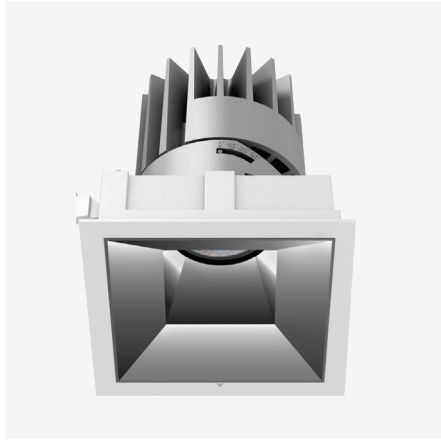


Recco-F1255

18W / 25W Fixed LED Square Recessed Downlight

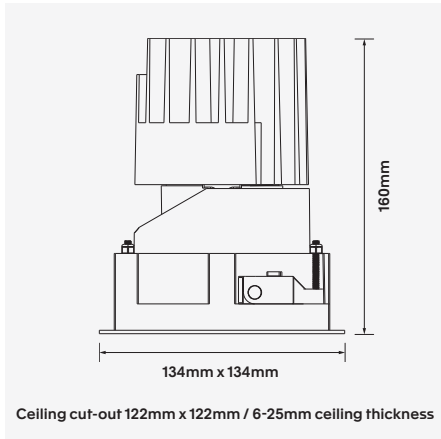


Luminaire Finishes

- White (WH) Black (BK)

Interchangeable Baffle Finishes

- White (WH) Black (BK) Matt (MT)
 Specular (SP) Black Chrome (BC)
 Gold (GD)



Accessories

RECCO-1255-HC
Honeycomb mesh



RECCO-1255-TR
Trimless



WATTAGE 18W / 25W	COI ON REQUEST	Bluetooth	Z	CE	WARRANTY 5YR
3-Step	122 x 122	28° / 40° / 50°	CRI (Ra) >90	IP 20	UGR <19

A fixed recessed LED architectural luminaire series providing low-glare light distribution. High quality and versatile, the Recco fixed LED downlight series offers optimised and efficient performance in a vast range of cut-out and wattage/lumen packages. Recco is available in a range of colour temperatures, beam angles, secondary reflector finishes and dimming options. Additional accessories can also be used with the recessed downlight, including an anti-glare honeycomb reflector and trimless mounting kit.

Recco fixed is constructed from a die-cast aluminium housing with high purity aluminium primary reflector and high-grade polycarbonate secondary reflector. A spring-loaded push back arm also makes for easy installation.

The Recco series Integrates Zhaga compliant Citizen LED technology with Tridonic control gear and comes with a 5 year warranty.

- Luminaire wattage: 18W, 25W (System 21W, 28W)
- Luminous flux: 1400-1500Lm, 1800-1900Lm²
- Luminaire efficacy: 77.77Lm/W, 72Lm/W¹
- Correlated colour temperature: 3000K, 4000K
- Colour rendering index: >90 standard; >97/COI on request³
- Mac-Adams Ellipse: 3-SDCM
- LED brand: Citizen COB LED
- Glare control: UGR<19
- Symmetrical distribution: 28°, 40°, 50°
- Outer Trim L134mm x W134mm;
- Ceiling cut-out W122mm x L122mm
- Ingress protection rating: IP20
- Luminaire finishes: White, Black
- Baffle Options: White, Black, Matt, Specular, Black Chrome, Gold⁴
- Longevity: >50,000Hrs L80 B10
- Driver: Tridonic non-dimmable as standard
- Dimming: DALI-2, BLE (basicDIM Wireless / Casambi) on request⁴
- Weight: 860g (excluding driver)
- Warranty: 5 years⁵

Model	LED Output ²	Luminous Flux ²	LED Wattage	System Wattage	CCT	CRI ³	Distribution
RECCO-F1255-18W-3K	2000Lm	1400Lm	18W	21W	3000K	>90	28°, 40°, 50°
RECCO-F1255-18W-4K	2100Lm	1500Lm	18W	21W	4000K	>90	28°, 40°, 50°
RECCO-F1255-25W-3K	2600Lm	1800Lm	25W	28W	3000K	>90	28°, 40°, 50°
RECCO-F1255-25W-4K	2700Lm	1900Lm	25W	28W	4000K	>90	28°, 40°, 50°

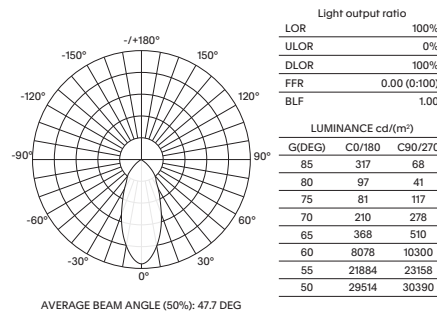
For Non-dimming add suffix ND
 For DALI-2 dimming add suffix D
 For BLUETOOTH dimming add suffix BT

Example product order code configuration: RECCO-F1255-25W-3K-50-D-(WH/SP)

Model	Wattage	CCT	Distribution	Driver	Luminaire Finish / Baffle Finish
RECCO-F1255	25W	3K	50	D	WH/SP

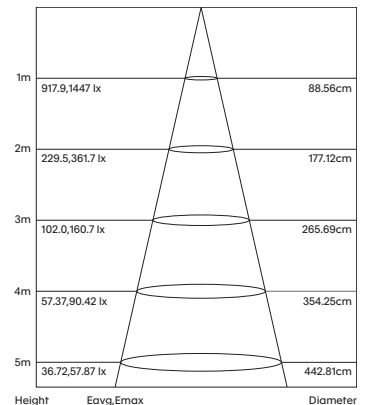
Light Distribution

RECCO-F1255-25W-3K-50



Room Reflectance	Utilisation Factors										
	Room Index					Room Index					
Ceiling	Walls	Floor	0.80	1.00	1.25	1.50	2.00	2.50	3.00	4.00	5.00
70	50	20	75	83	89	93	98	101	103	106	108

Cone Diagram



1 Luminaire efficacy based on CCT 3000K; CCT variation will alter efficacy
 2 +/- 10% stated initial LED and luminous flux tolerance
 3 Colour Rendering Index: >90 Standard (Citizen COB Series), >97/Cyanosis Observation Index (COI) compliance on request: Citizen LED series compliant to AS/NZS1680.2.5:2018; COI <3.3 and CCT 3300-5300K
 4 Additional charges apply for non-standard colour/s and dimming options
 5 Five year manufacturer's warranty covering product defects and performance deficiencies