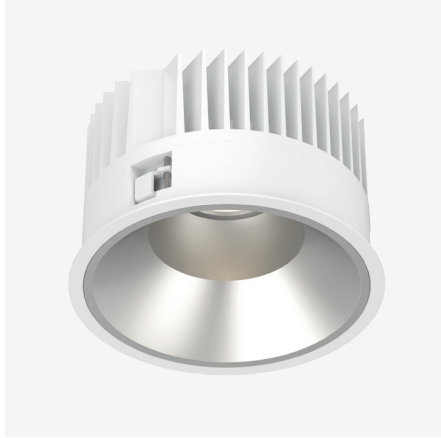


## Kuppel-F200

### 25W / 38W / 52W Fixed LED Recessed Downlight

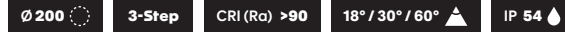
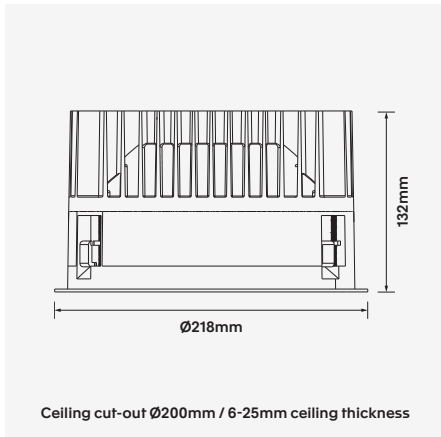


#### Luminaire Finishes

White (WH)  Black (BK)

#### Interchangeable Baffle Finishes

White (WH)  Black (BK)  Matt (MT)



Recessed LED architectural luminaire series providing optimised and efficient performance with an IP54 rating and deep-set lamp source for symmetrical low glare distribution. Available in a range of wattage/lumen packages, the Kuppel series also offers various dimming options with screw adjustable wing mounting for easy installation.

Made from a die-cast aluminium housing with an aluminium reflector, it is available in a variety of finishes. Integrating Zhaga compliant Citizen LED technology and coupled with Tridonic control gear, the Kuppel series offers a 5 year warranty.

- Luminaire wattage: 25W, 38W, 52W (System 28W, 42W, 56W)
- Luminous flux: 2800-3400Lm, 3900-4600Lm, 4800-5600Lm<sup>2</sup>
- Luminaire efficacy: 128Lm/W, 115.79Lm/W, 103.85/W<sup>1</sup>
- Correlated colour temperature: 3000K, 4000K
- Colour rendering index: >90<sup>3</sup>
- Mac-Adams Ellipse: 3-SDCM
- LED Brand: Citizen COB LED
- Glare control: UGR<19
- Symmetrical distribution: 18°, 30°, 60°
- Outer trim Ø218mm; Ceiling cut-out Ø200mm
- Ingress protection rating: IP54 standard (From underside)
- Luminaire finishes: White, Black
- Baffle Options: White, Black, Matt<sup>4</sup>
- Longevity: >50,000Hrs L80 B10
- Driver: Tridonic non-dimmable LED driver as standard
- Dimming: DALI-2, BLE (basicDIM Wireless / Casambi) on request<sup>4</sup>
- Weight: 1.75Kg (excluding driver)
- Warranty: 5 years<sup>5</sup>

Model	LED Output <sup>2</sup>	Luminous Flux <sup>2</sup>	LED Wattage	System Wattage	CCT	CRI <sup>3</sup>	Distribution
KUPPEL-F200-25W-3K-18	3900Lm	3200Lm	25W	28W	3000K	>90	18°
KUPPEL-F200-25W-4K-18	4100Lm	3400Lm	25W	28W	4000K	>90	18°
KUPPEL-F200-25W-3K-30	3900Lm	3200Lm	25W	28W	3000K	>90	30°
KUPPEL-F200-25W-4K-30	4100Lm	3400Lm	25W	28W	4000K	>90	30°
KUPPEL-F200-25W-3K-60	3900Lm	2800Lm	25W	28W	3000K	>90	60°
KUPPEL-F200-25W-4K-60	4100Lm	3000Lm	25W	28W	4000K	>90	60°
KUPPEL-F200-38W-3K-18	5400Lm	4400Lm	38W	42W	3000K	>90	18°
KUPPEL-F200-38W-4K-18	5600Lm	4600Lm	38W	42W	4000K	>90	18°
KUPPEL-F200-38W-3K-30	5400Lm	4400Lm	38W	42W	3000K	>90	30°
KUPPEL-F200-38W-4K-30	5600Lm	4600Lm	38W	42W	4000K	>90	30°
KUPPEL-F200-38W-3K-60	5400Lm	3900Lm	38W	42W	3000K	>90	60°
KUPPEL-F200-38W-4K-60	5600Lm	4100Lm	38W	42W	4000K	>90	60°
KUPPEL-F200-52W-3K-18	6600Lm	5400Lm	52W	56W	3000K	>90	18°
KUPPEL-F200-52W-4K-18	6800Lm	5600Lm	52W	56W	4000K	>90	18°
KUPPEL-F200-52W-3K-30	6600Lm	5400Lm	52W	56W	3000K	>90	30°
KUPPEL-F200-52W-4K-30	6800Lm	5600Lm	52W	56W	4000K	>90	30°
KUPPEL-F200-52W-3K-60	6600Lm	4800Lm	52W	56W	3000K	>90	60°
KUPPEL-F200-52W-4K-60	6800Lm	5000Lm	52W	56W	4000K	>90	60°

For Non-dimming add suffix ND  
For DALI-2 dimming add suffix D  
For BLUETOOTH dimming add suffix BT

Example product order code configuration: KUPPEL-F200-52W-3K-60-D-(WH/WH)

Model	Wattage	CCT	Distribution	Driver	Luminaire Finish / Baffle Finish					
KUPPEL-F200	+	52W	+	3K	+	60	+	D	+	WH/WH

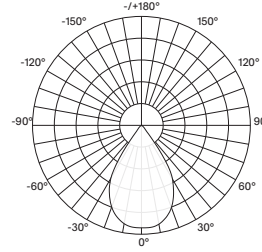
1 Luminaire efficacy based on CCT 3000K; CCT variation will alter efficacy  
2 +/- 10% stated initial LED and luminous flux tolerance  
3 Colour Rendering Index: >90 Standard (Citizen COB series)  
4 Charges apply for non-standard colour/s and dimming options.  
5 Minimum order quantities apply for non-standard items and custom finishes will incur additional charges

## Kuppel-F200

### 25W / 38W / 52W Fixed LED Recessed Downlight

#### Light Distribution

KUPPEL-F200-52W-3K-60



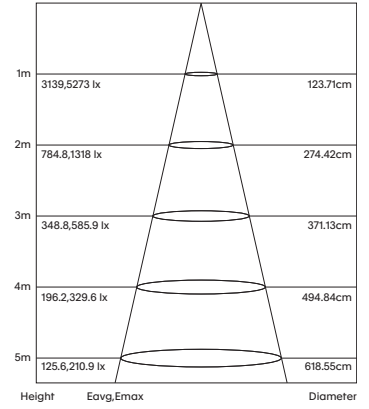
AVERAGE BEAM ANGLE (60%): 63.7 DEG

Light output ratio	
LOR	100%
ULOR	0%
DLOR	100%
FFR	0.00 (0:100)
BLF	1.00

LUMINANCE cd/(m²)		
G(DEG)	C0/180	C90/270
85	100	90
80	57	50
75	49	42
70	703	334
65	1738	1286
60	2821	2306
55	4606	3762
50	7784	6849

Room Reflectance		Utilisation Factors									
Ceiling	Walls   Floor	Room Index									
70	50   20	0.80	1.00	1.25	1.50	2.00	2.50	3.00	4.00	5.00	
		89	93	98	101	104	106	107	110	111	

#### Cone Diagram



- 1 Luminaire efficacy based on CCT 3000K; CCT variation will alter efficacy
- 2 +/- 10% stated initial LED and luminous flux tolerance
- 3 Colour Rendering Index: >90 Standard (Citizen COB series)
- 4 Charges apply for non-standard colour/s and dimming options.
- 5 Minimum order quantities apply for non-standard items and custom finishes will incur additional charges