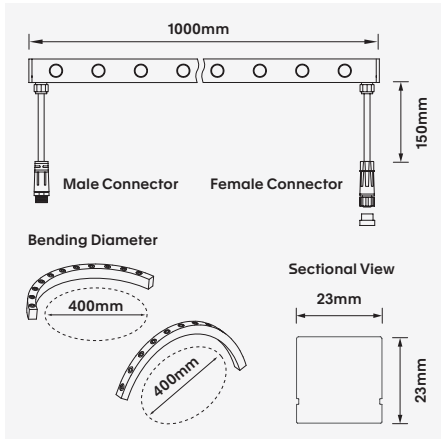


Intense-3D-Optic-2323

18W Flexible 3D Bending Optical Neon Flex



Accessories

Intense-3D-Optic-2323-CMC
Clear Polycarbonate Mounting Clip
W52.5mm x H25mm x L25mm



Intense-3D-Optic-2323-LMC
Metal Locking Mounting Clip (Silver)
W23.8mm x H25.4mm x L25mm



Intense-3D-Optic-2323-MP
Aluminum Mounting Channel
W26.5mm x H25mm x L1000mm



Intense-3D-Optic-2323-BMP
Stainless Steel Bendable Mounting Channel
W25mm x H26.4mm x L1000mm



Intense-3D-Optic-2323-LMP
Aluminum Mounting Channel + Locking Clip
W32.3mm x H26.4mm x L1000mm



WATTAGE 18W	15°, 25°, 30°, 45°, 60°	Bluetooth	CE	3-Step	WARRANTY 5YR	
IP 67	IK 07	24VDC	CRI (Ra) >80	UV Resistance	Saltwater Resistance	3D BEND
SINGLE BIN						

Intense-3D-Optic presents an efficient and versatile 24V flexible top and side bending LED neon system with a range of applications. Intense-3D-Optic features advanced LED optical technology, high colour rendering capability as standard and a flexible silicon exterior.

IP67 rated and UV stable it is capable of withstanding most harsh exterior applications including damp environments. It is suitable for landscape architecture and residential interior applications where a focused or grazing continuous line of light is needed, even around bends.

Integrating branded constant voltage LED drivers from brands such as CU-Power, TCI, Vossloh-Schwabe, Tridonic or Meanwell with DALI-2 or Bluetooth dimming available on request, the Intense series comes with a 5 year warranty.

- Luminaire wattage/m: 18W
- Luminous flux/m: 1710-1900Lm²
- Luminaire efficacy: 100Lm/W¹
- Correlated colour temperature: 2700K, 3000K, 4000K
- Colour rendering index: >80 (3) standard; >90 optional
- Single Bin CCT selection
- LED Source / Quantity: White SMD3535; 24pcs/m
- Distribution options: 15°, 25°, 30°, 45°, 60°
- Minimum Cutable Section: 250mm (group of 6 x SMD LED)
- Ingress protection rating: IP67
- Impact protection rating: IK07
- Longevity: >50,000Hrs L80
- Installation: Clear mnt. clips, Locking mnt. clips, Aluminum mnt. profile, Bendable mnt. profile, linear Aluminum profile + locking clip⁴
- Driver: Requires 24VDC non-dimmable constant voltage LED driver⁴
- Dimming: Remote DALI-2, BLE (basicDIM Wireless /Casambi)⁴
- Warranty: 5 years⁵

Model	Luminous Flux/m ²	LED Wattage/m	CCT	CRI ³	Distribution	Max. Continuous Length/m
INTENSE-3D-OPTIC-2323-18W-27K	1710Lm	18W	2700K	>90	15°, 25°, 30°, 45°, 60°	5m
INTENSE-3D-OPTIC-2323-18W-3K	1800Lm	18W	3000K	>90	15°, 25°, 30°, 45°, 60°	5m
INTENSE-3D-OPTIC-2323-18W-4K	1900Lm	18W	4000K	>90	15°, 25°, 30°, 45°, 60°	5m

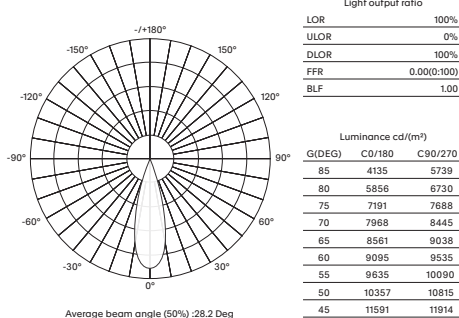
For Non-dimming add suffix ND
For DALI-2 dimming add suffix D
For BLUETOOTH dimming add suffix BT

Example product order code configuration: INTENSE-3D-OPTIC-2323-18W-3K-30-ND

Model	Wattage	CCT	Distribution	Driver
INTENSE-3D-OPTIC-2323	+ 18W	+ 3K	+ 30	+ ND

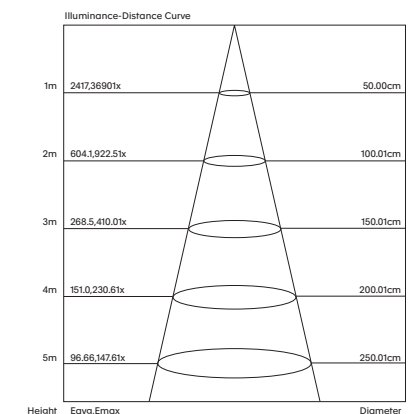
Light Distribution

INTENSE-3D-OPTIC-2323-18W-30



Room Reflectance		Utilisation Factors		Room Index							
Ceiling	Walls	Floor	0.80	1.00	1.25	1.5	2.00	2.50	3.00	4.00	5.00
70	50	20	80	86	91	95	99	101	104	107	109

Cone Diagram



- 1 Luminaire efficacy based on CCT 3000K; CCT variation will alter efficacy
- 2 +/- 10° stated initial LED and Luminous Flux tolerance
- 3 Colour Rendering Index: >90 Standard
- 4 Charges apply for LED drivers, dimming controls and accessories
- 5 Five year manufacturer's warranty covering product defects and performance deficiencies

Intense-3D-Optic-2323

18W Flexible 3D Bending Optical Neon Flex

WATTAGE 18W

15°, 25°, 30°, 45°, 60°



Bluetooth



3-Step

WARRANTY 5YR

IP 67

IK 07

24VDC

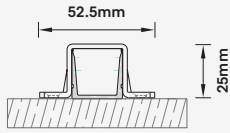
CRI (Ra) >80

UV Resistance

Saltwater Resistance

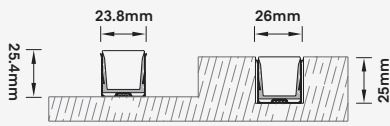
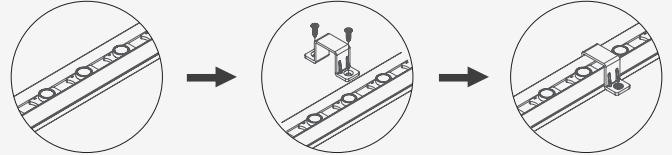
3D BEND

SINGLE BIN



Surface Mounting

Fixed by clip and screw

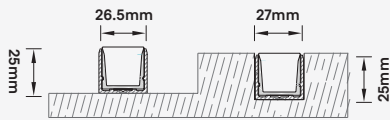


Surface Mounting Recessed Mounting

Fixed by bracket and screw

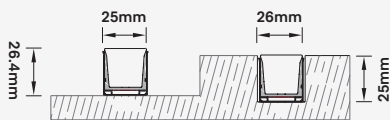
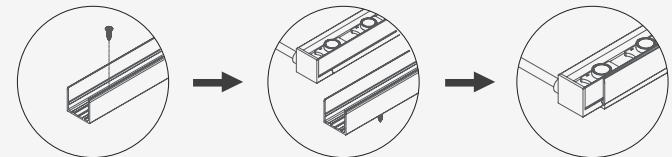


Note: Standard colour in silver, White or Black is optional.



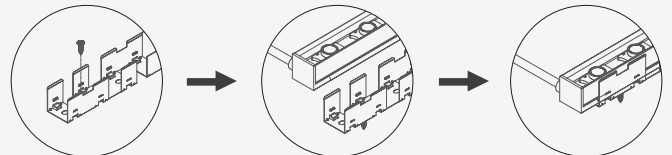
Surface Mounting Recessed Mounting

Fixed by aluminium profile and screw

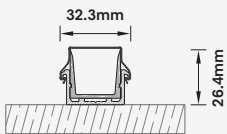


Surface Mounting Recessed Mounting

Fixed by bendable bracket and screw



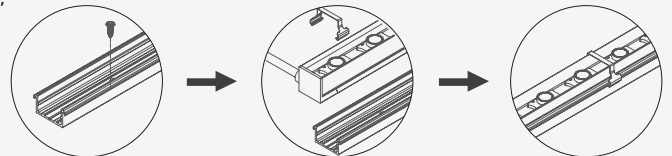
Note: Standard colour in silver, White or Black is optional.



Surface Mounting

Fixed by aluminium channel, clip and screw.

Preferred method for outdoor applications.



- 1 Luminaire efficacy based on CCT 3000K; CCT variation will alter efficacy
- 2 +/- 10° stated initial LED and Luminous Flux tolerance
- 3 Colour Rendering Index: >90 Standard
- 4 Charges apply for LED drivers, dimming controls and accessories
- 5 Five year manufacturer's warranty covering product defects and performance deficiencies